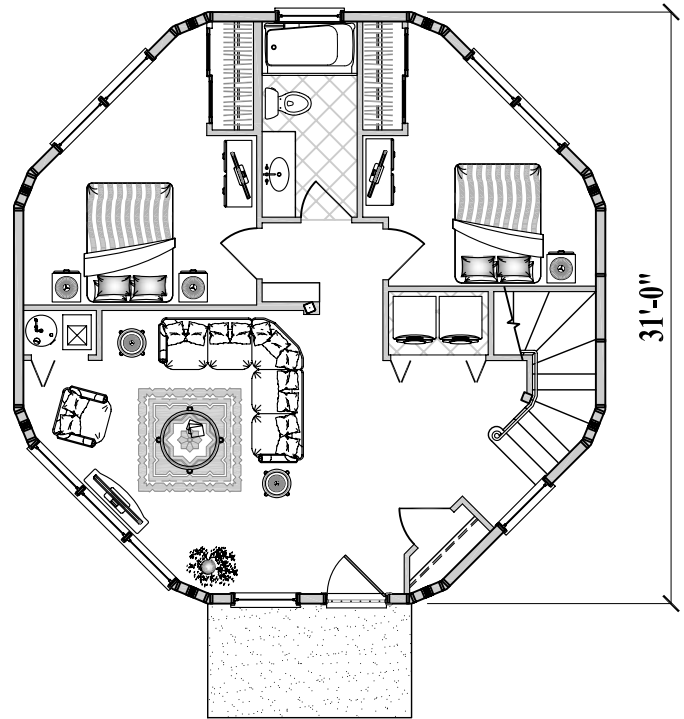


Upper Floor Plan  
(800 sq. ft. or 74.3 m<sup>2</sup>)

3 Bedroom(s) / 2 Bath(s)  
Living / Family / Dining / Kitchen  
(Total 1600 sq. ft. / 148.6 m<sup>2</sup>)



Lower Floor Plan  
(800 sq. ft. or 74.3 m<sup>2</sup>)

