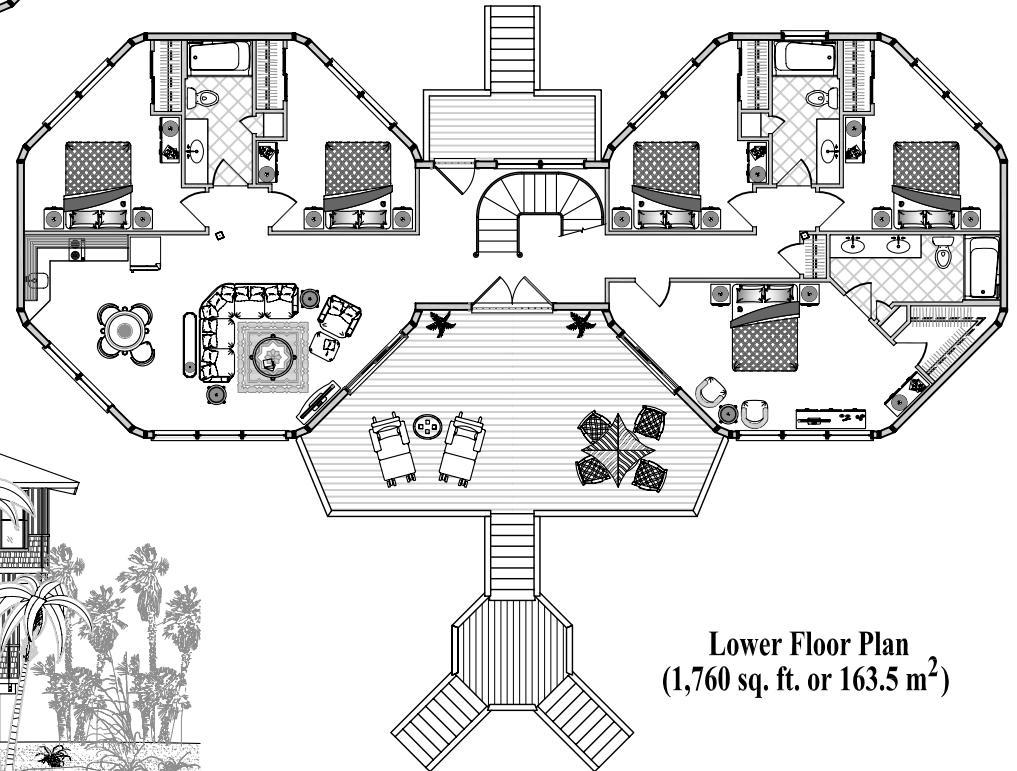


Upper Floor Plan
(2,360 sq. ft. or 219.3 m²)

6 Bedrooms / 4.5 Baths
Living / Dining / Kitchen
Family Room / Study / Foyer
(Total 4,120 sq. ft. or 382.8 m²)



Lower Floor Plan
(1,760 sq. ft. or 163.5 m²)

