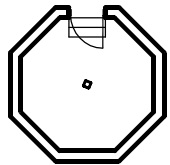
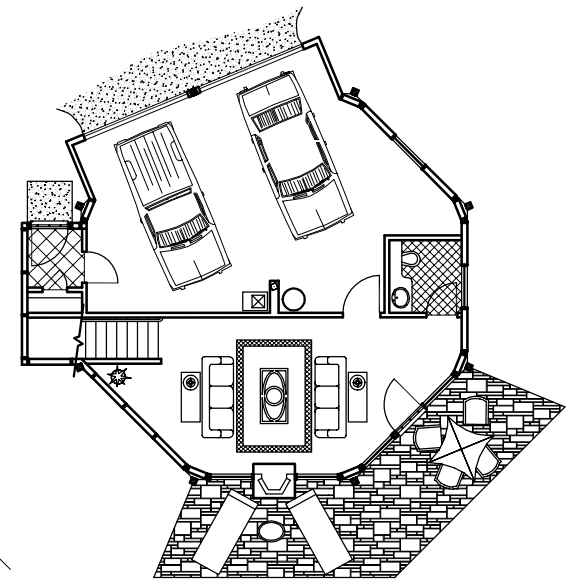


Upper Floor Plan  
(2,990 sq. ft.)

- 3 Bedrooms
- 3-1/2 Baths
- Living/Dining
- Kitchen/Foyer
- 2 Family Rooms
- Utility/Garage
- (Total 4,020 sq. ft.)



Pedestal Plan  
(125 sq. ft.)



Lower Floor Plan  
(905 sq. ft.)

