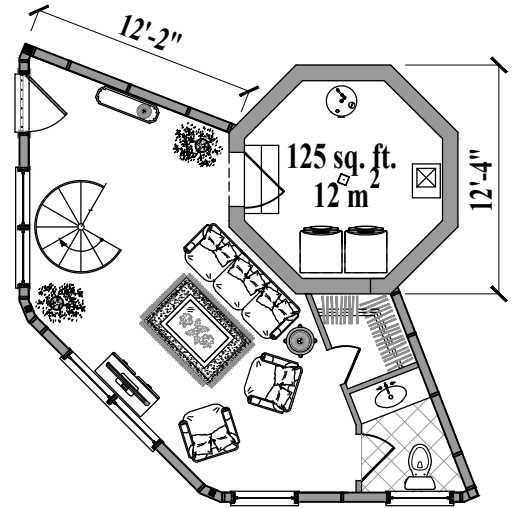


Floor Plan
 (Total 1,135 sq. ft. or 105 m²)

2 Bedrooms / 2 Baths
Living / Dining / Kitchen
Family Room / Utility / Powder Room
 (Total 1,600 sq. ft. or 150 m²)



Lower Floor Plan
 (Total 465 sq. ft. or 45 m²
 including Pedestal)

