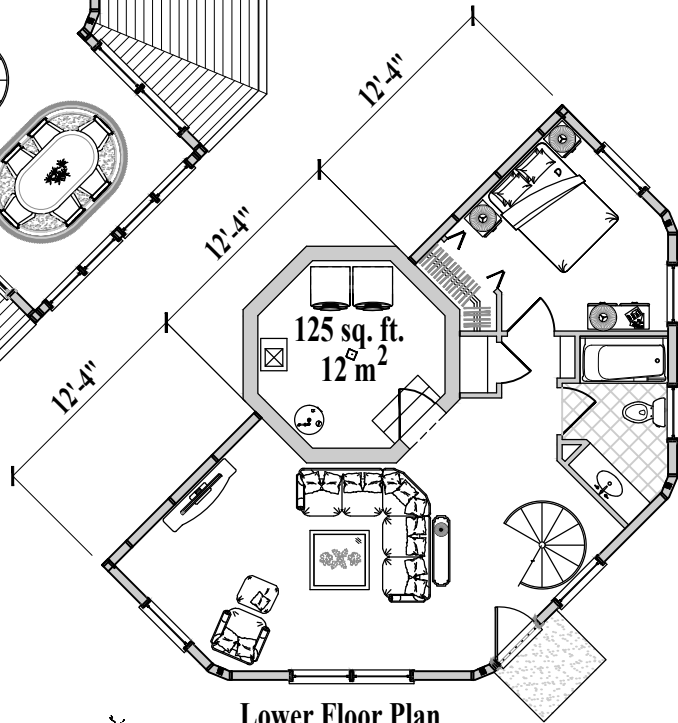


Floor Plan  
(Total 1,480 sq. ft. or 137m<sup>2</sup>)

3 Bedrooms / 3 Baths  
Living / Dining / Kitchen  
Family Room / Utility  
(Total 2,150 sq. ft. or 200 m<sup>2</sup>)



Lower Floor Plan  
(Total 670 sq. ft. or 62<sup>2</sup>m  
including Pedestal )

