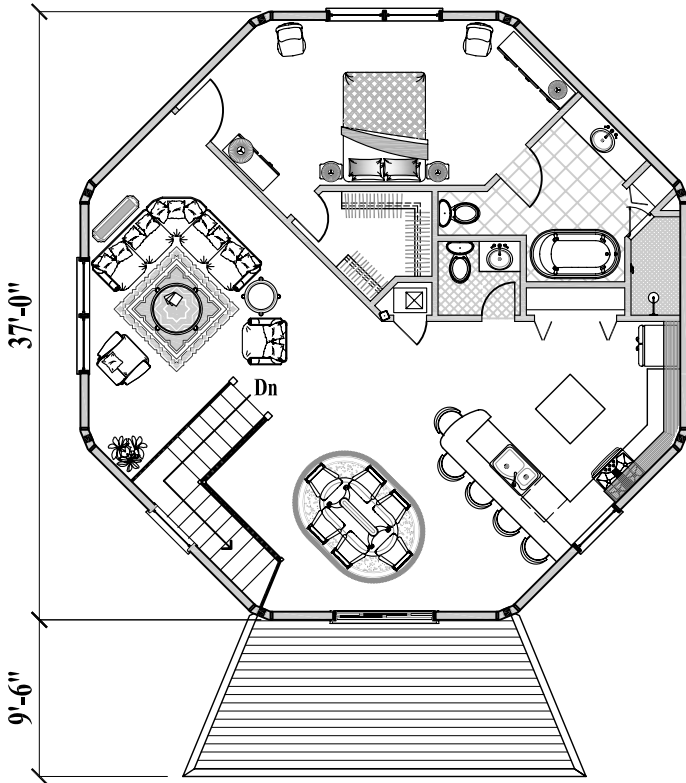
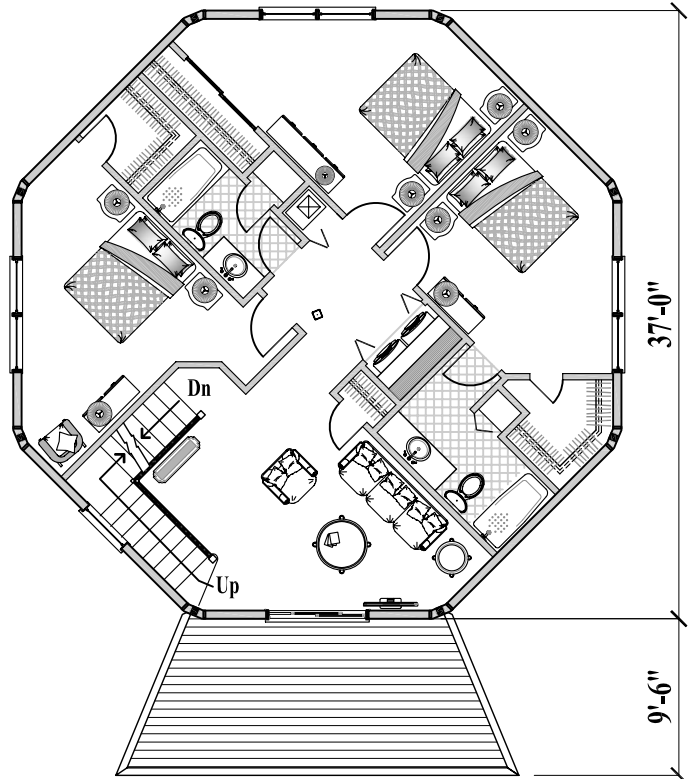


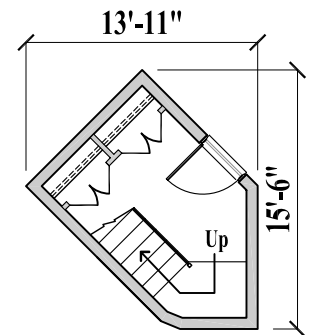
4 Bedrooms / 3 1/2 Baths  
 Living / Dining / Kitchen  
 Family Room  
 (Total 2,400 sq. ft. or 222.8 m<sup>2</sup>)



Upper Floor Plan  
 (1,135 sq. ft. or 105.4 m<sup>2</sup>)



Lower Floor Plan  
 (1,135 sq. ft. or 105.4 m<sup>2</sup>)



Entry at Grade  
 (130 sq. ft. or 12.0 m<sup>2</sup>)