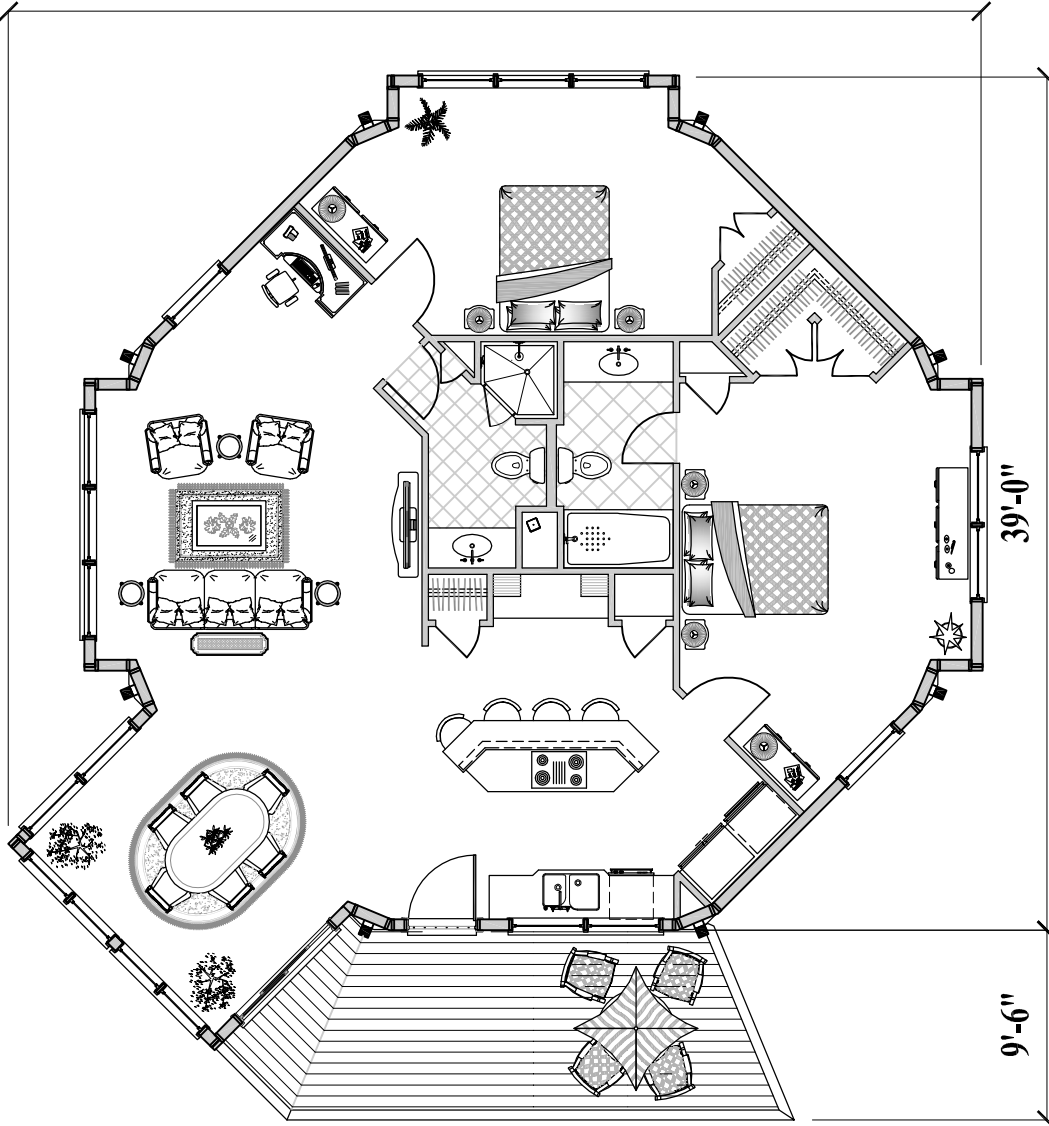


44'-5"

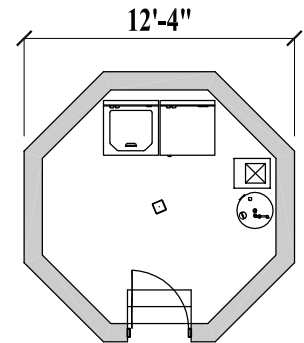


**Floor Plan**  
(Total 1,325 sq. ft. or 123 m<sup>2</sup>)

**2 Bedroom / 2 Bath**  
**Living / Dining / Kitchen**  
(Total 1,450 sq. ft. or 135 m<sup>2</sup>)

39'-0"

9'-6"



**Pedestal Plan**  
(Total 125 sq. ft. or 12 m<sup>2</sup>)

