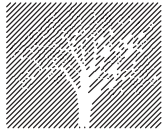
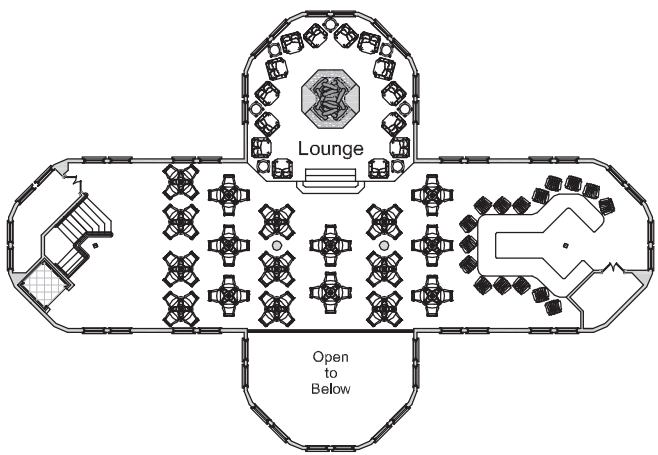


SKI SLOPE ELEVATION

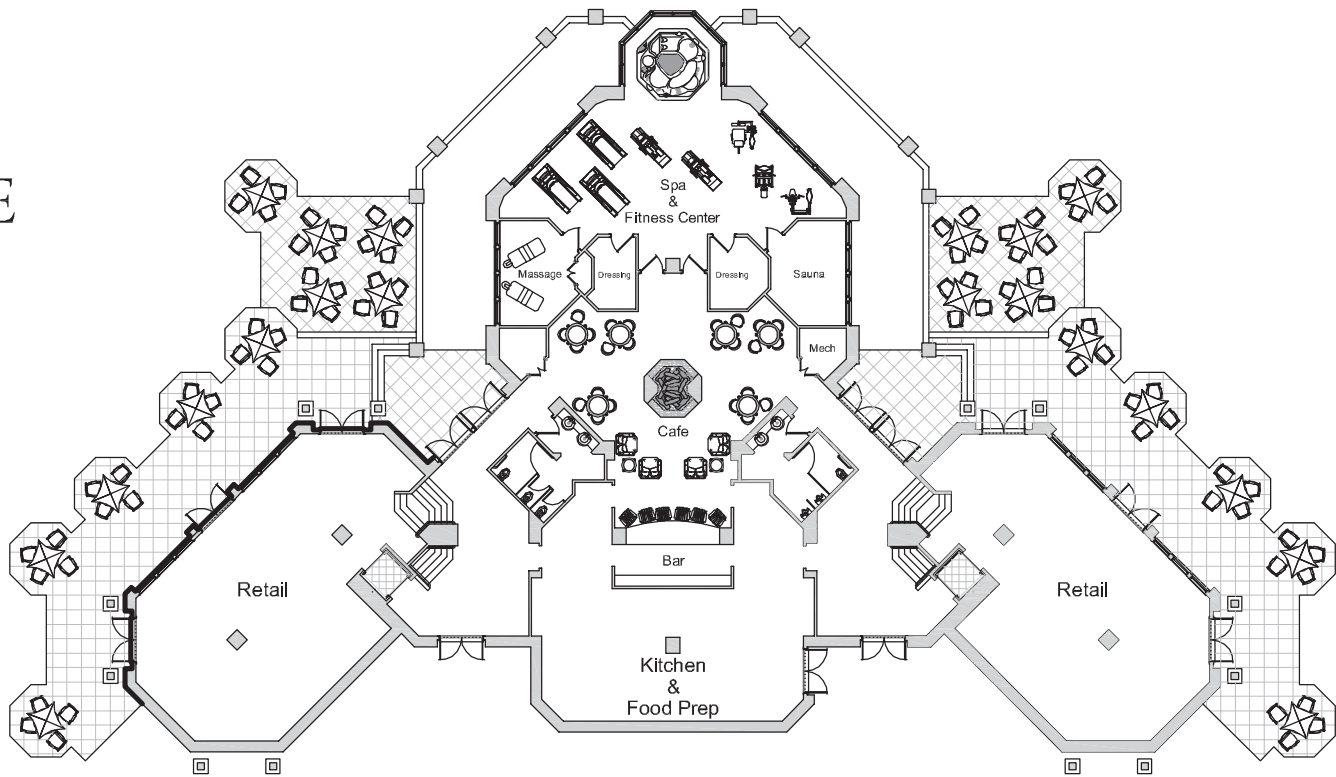


TOPSIDER
BUILDING SYSTEMS
Commercial Portfolio

POST & BEAM
ALPINE SKI LODGE



UPPER LEVEL PLAN



LOWER LEVEL PLAN

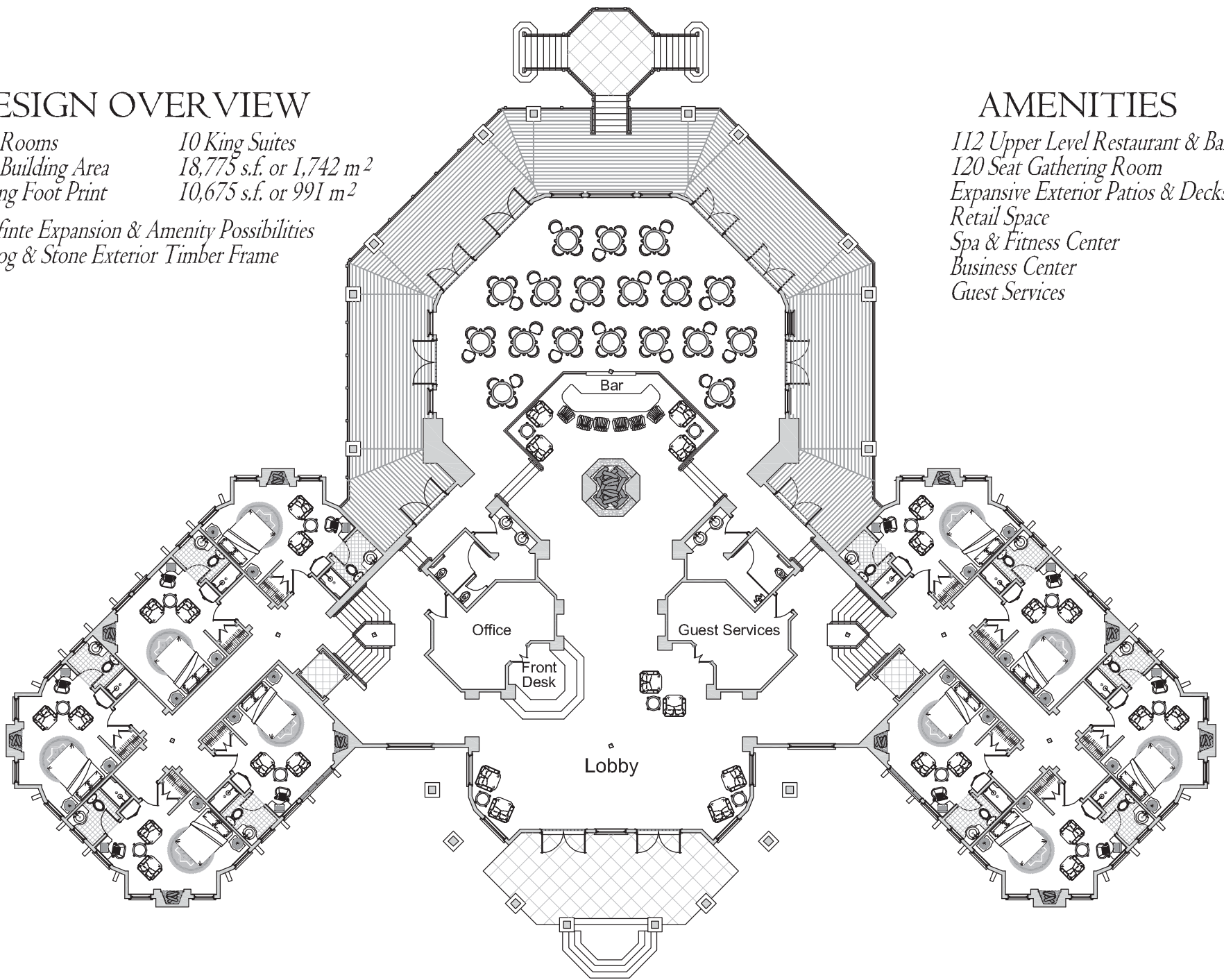
DESIGN OVERVIEW

Total Rooms 10 King Suites
Total Building Area 18,775 s.f. or 1,742 m²
Building Foot Print 10,675 s.f. or 991 m²

Infinte Expansion & Amenity Possibilities
Log & Stone Exterior Timber Frame

AMENITIES

112 Upper Level Restaurant & Bar
120 Seat Gathering Room
Expansive Exterior Patios & Decks
Retail Space
Spa & Fitness Center
Business Center
Guest Services



MAIN LEVEL PLAN